

M4B1-3.5W-27K-40-A
M4B1-3.5W-30K-40-A
M4B1-3.5W-27K-60-A
M4B1-3.5W-30K-60-A

M4B1-5.5W-27K-40-A
M4B1-5.5W-30K-40-A
M4B1-5.5W-27K-60-A
M4B1-5.5W-30K-60-A

Lumien**CORE**

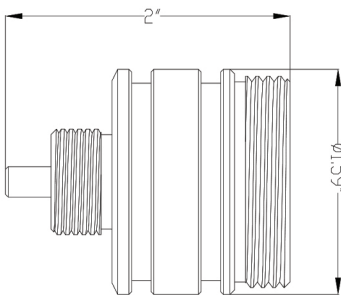


Micro Modules
IP68 Rated (waterproof)

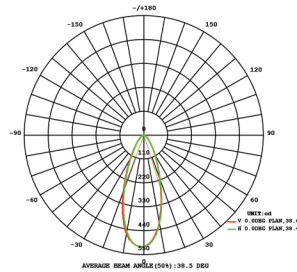


SPECIFICATIONS

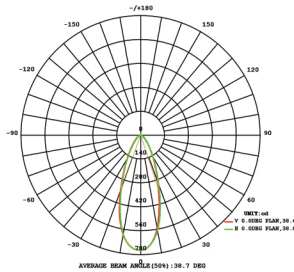
Fixture Type	Fixture Components	Fixture Material	Fixture Style	Watts	Color Temperature	Beam Spread	Finish
M (Micro)	4 (Integrated Modular)	B (Brass)	1 (ML)	3.5W (3.5W) 5.5W (5.5W)	27K (2700K) 30K (3000K)	40° 60°	A (Antiqued)



3.5W Module

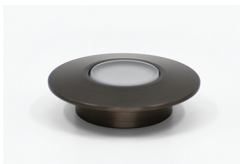


5.5W Module



Construction: Brass
 Finish: Antique Brush
 Lead Wire: 6ft long
 Light Source: Modular LED
 Wattage: 3.5W & 5.5W
 Operating Voltage: 12-15V
 Lumens: 325 & 435 LM
 Beam Spread: 40° or 60°
 Color Temperature: 2700K, 3000K
 Volt Amps: (3.5W) 5.59
 Volt Amps: (5.5W) 8.66
 RGB: No
 CRI: 80+
 Rated Life: 50,000 Hrs
 Dimmable: Primary Dimming Capable

ACCESSORIES



LAB-024



LAB-009



LAB-044



LAB-006

WARRANTY

Lifetime Warranty on the Housing,
10 Year Warranty on the LED Light Source

CERTIFICATION

UL Listed I File #E501872

Lumien Lighting reserves the right to modify the design of our products at any time and data listed on spec sheets is subject to change.