

# 2010 ANNUAL REPORT

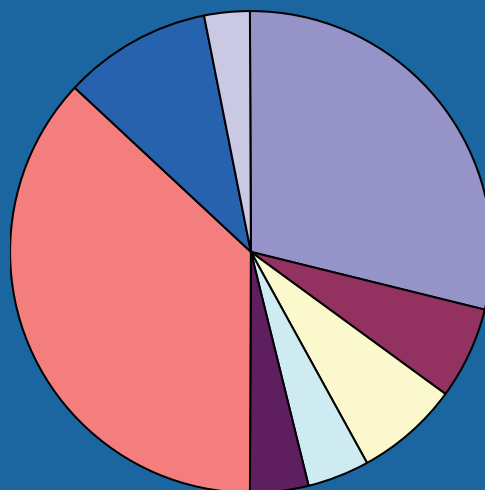
## Board of Directors

Chair Andrew Riddle Hantz Financial	Don Hausfeld The Landon Group
Vice-Chair Adam Ogburn BB&T	Tain Kell Judge, Superior Court of Cobb County
Secretary Rita Moore Moore Pension Administration Consulting	Alan Lee Zep, Inc.
<b>Treasurer</b> Charlie Chesnutt Genuine Parts Company	Paul Lopez Element Funding
Nancy Blythe Walton Communities	Rev. Jim Lowery District Superintendent of the United Methodist Church
Jim Budzinski WellStar Health Systems	Chris Mingledorff Moore, Ingram Johnson & Steele, LLP
Jane Bunn WellStar Foundation	Rev. Jim Nixon St. Catherine's Episcopal Church
Thomas Ciarletta BlueLinx Corporation	Denise O'Connell Moore & Cubbedge, LLC
Don Crampton Coca-Cola Refreshments	John Sell Georgia Power
Nuby Fowler Interpro Management	Earl Stine IBM, Retired
Virginia Galvin Cobb & Douglas Board of Health, Ret.	Dan Styf Kaiser Permanente of Geor- gia
Linda Hasty Community Volunteer	Glynda Thor Cobb EMC
	Todd Van Dyke Jackson Lewis, LLP

## MUST Corporate Leadership

President & CEO Rev. John R. Moeller, Jr. jmoeller@mustministries.org	VP of Programs Rev. Andy Peabody apeabody@mustministries.org
VP of Administration Tom Riddle triddle@mustministries.org	VP of Development Carol Wisdom cwisdom@mustministries.org

## CONTRIBUTIONS



- Individual - 29%
- Religious - 6%
- Corporations/Civic - 7%
- Foundations - 4%
- United Way - 4%
- Government (housing only) - 37%
- Special Events - 10%
- Other/Designated - 3%

*Does not include the value of in-kind contributions of \$2,387,740 or Capital Campaign pledges and gifts of \$975,696*

## EIGHTY CENTS OF EVERY DOLLAR (REVENUE AND IN-KIND) GOES DIRECTLY TO CLIENT PROGRAMS.

REVENUE	EXPENSES
<b>CONTRIBUTIONS &amp; SPECIAL EVENTS:</b> \$4,655,613	<b>PROGRAM SERVICES:</b> \$5,655,680
<b>CAPITAL CAMPAIGN:</b> \$975,696	<b>ADMINISTRATIVE SUPPORT:</b> \$540,550
<b>GOVERNMENT GRANTS &amp; OTHER REVENUES:</b> \$1,609,429	<b>FUNDRAISING:</b> \$825,778
<b>TOTAL:</b> \$7,240,738 (INCLUDES CAPITAL BUILDING FUND)	<b>TOTAL:</b> \$7,022,008



MUST has received its fourth 4-star rating from Charity Navigator, America's largest independent evaluator of charities. Less than 13% of the charities they evaluate have received at least three consecutive evaluations of their highest rating, indicating that MUST outperforms most of the nonprofits in America when considering fiscal responsibility. This "Exceptional" designation from Charity Navigator differentiates MUST from its peers and demonstrates to the public that it is worthy of trust.

**MUST Ministries is a 501(c)(3) not-for-profit organization.**

## INNOVATIVE CLINIC HOUSED AT MUST



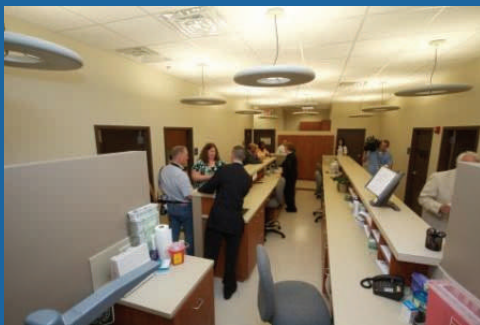
Old clinic located on the Elizabeth Inn Campus

One of the most exciting developments in local healthcare took place at MUST Ministries in 2010. A new clinic opened for men, women and children of Cobb County who are underserved, uninsured or homeless.

The healthcare clinic will not only help those in poverty obtain access to excellent care, but also help the county reduce unnecessary emergency room visits and critical care issues that arise from neglect. More than 50,000 Cobb residents live at or below the poverty level and many are without quality healthcare.

Established 16 years ago in collaboration with Kennesaw State University's Wellstar College of Health and Human Services, Center for Community Health, the former clinic sat in a single-wide trailer and was woefully too confined for the 2000 patient contacts a year. The new clinic is housed in the MUST Foothills location on Cobb Parkway in 2,600-sq.-ft. with six treatment rooms.

The facility, complete with a nursing station and lab, offers primary care, health education, disease prevention, early detection, treatment and management of chronic and episodic conditions, health and mental health counseling and specialty referrals. Volunteer health professionals and nursing professors also help create an excellent practice site for student nurse experiences.



Nurse's Station in the new Health Clinic located on the Foothills Campus



Serving Our Neighbors in Need™

### 2010 By The Numbers

**\$5,653,440**

Collective earning power of the **302** clients who found employment through MUST **Education and Employment** services

**421,177**

Pounds of **groceries** distributed to MUST Clients.

**265,000**

Number of **volunteer** hours

**177,821**

Articles of **clothing** distributed

**103,448**

**Summer Lunches** delivered to hungry children

**78,600**

**Meals** served at the Loaves and Fishes Kitchen

**46,741**

**Bed nights** of safe, comfortable rest.

**32,233**

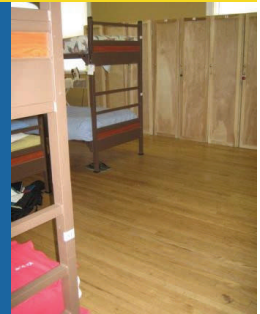
Total number of **clients** served

**4,262**

Number of **children** served by the MUST Toy Shop

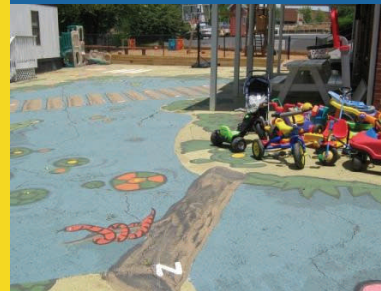
## EMERGENCY SHELTER RENOVATION COMPLETE

An extensive expansion and renovation of the Elizabeth Inn added 24 beds to the high-demand facility. Originally, the shelter was located on one floor with a partition between the men and the women/children areas. Today, the men have 40 beds upstairs and the women and children are housed in 24 beds downstairs, including some family bedrooms.



New floors and furniture in the Elizabeth Inn

The floors have been refinished, furniture replaced and expanded laundry facilities installed. A family room for women and children features toys, books and a television.



New play area and mural courtesy of High Tech Ministries

The outside areas have not been neglected during the renovations. More recently, a playground, sitting area, small guardhouse and dining room renovation have been completed. The new sitting area, courtesy of Hi-Tech Ministries, is a serene

space located behind the emergency shelter. It is the ideal place for parents to watch their children in the nearby play area take advantage of the rare opportunity to be a kid.

## KRESGE FOUNDATION CHALLENGE MET

The Kresge Foundation pledged the final \$500,000 of the capital campaign for the new MUST Ministries building on Highway 41 and challenged MUST supporters to match it. We did it!