



Entry & Patio Doors

INFINITY[®]
from MARVIN[®]
REPLACEMENT WINDOWS
by NORTH GEORGIA
REPLACEMENT WINDOWS

ngwindows.com



TABLE OF **CONTENTS**

4	Design It Your Way
6	Decorative Glass
8	Signet Series
10	Legacy Series
12	Frame Options
13	Multipoint Hardware
14	Emtek Hardware
16	Paint/Stain Options
19	Installation

DESIGN IT **YOUR WAY**

Imagine your home entryway with a new look! ProVia offers you a multitude of possibilities to create the new front door of your dreams. To simplify the experience, here are some things to think about as you start the design process.

DOOR **CONFIGURATION**

Find and customize a configuration that best fits the existing opening of your home.



DOOR **EXPOSURE**

When designing your new front door, it is wise to consider the amount of exposure your current door receives. Is your front door covered by a porch or overhang? Does the front of your home receive a great amount of direct sunlight? These considerations are important for choosing energy efficiency, privacy, colors and styles.



DOOR **STYLE**

How much glass would you like?



Solid



1/4 Lite



1/2 Lite



3/4 Lite



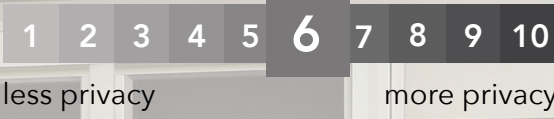
Full Lite



STYLE IS KNOCKING
OPEN THE DOOR

SOMERSET

PRIVACY RATING



Caming: Zinc

DECORATIVE GLASS

In addition to clear glass, ProVia offers a variety of decorative glass options to give you the privacy you want, while complementing both your style and home's architecture.

The decorative glass is hand-beveled and held together at the seams by coming, which comes in various finishes (depending upon the glass style chosen).



SIGNET FIBERGLASS

Signet Fiberglass doors are available in Mahogany, Cherry, Oak, Knotty Alder, Fir and Smooth Series. Structurally, the Signet door is far superior to traditional fiberglass doors with robust hardwood stiles and rails dovetailed at each corner. All Signet Fiberglass doors exhibit an exclusive DuraFuse Finishing System featuring P3 Fusion, allowing the advantage of an industry-best 15-year Finish Warranty.

SIGNET SKIN OPTIONS



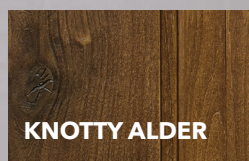
MAHOGANY



CHERRY



OAK



KNOTTY ALDER



FIR



SMOOTH



SIGNET FIBERGLASS DOOR STYLES



- ☞ Signet Cherry
- Signet Mahogany
- ⊕ Signet Oak
- Signet Knotty Alder
- ⊙ Signet Fir
- ⊞ Signet Smooth

Entry System U-Factor: As low as .16 (Tested to NFRC specifications for a 6 panel door with wood frame). Note: All Signet doors are shipped finished.

☞ Signet Fiberglass doors without glass are available as an Impact Shield Product.



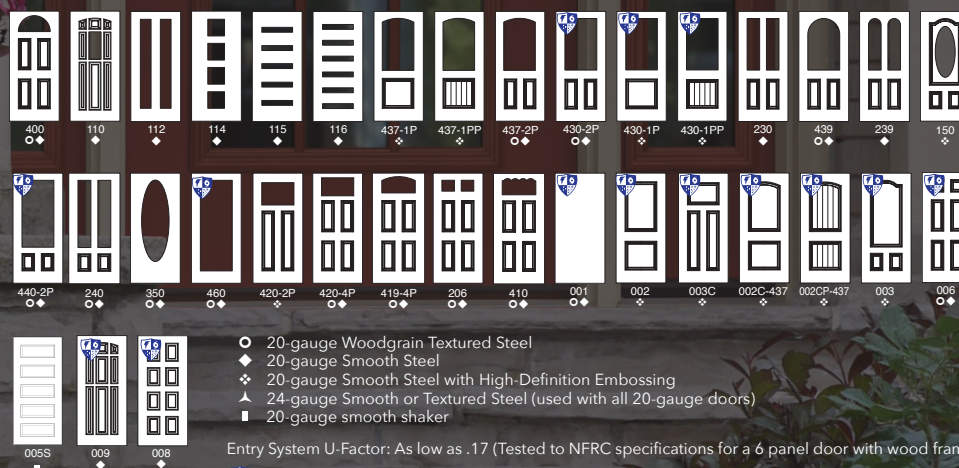
LEGACY STEEL

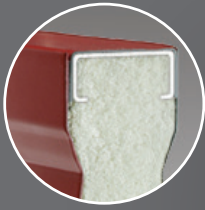
Legacy Steel features add up to a professional-class product. Whether you select Legacy Woodgrain Textured Steel or Smooth Steel, these door systems will provide an elegant, durable and energy efficient addition to any home.

LEGACY SKIN OPTIONS

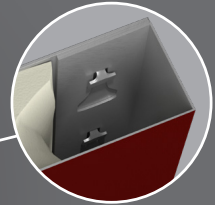


LEGACY STEEL DOOR STYLES





Composite top endcaps increase rigidity and energy efficiency.



Special adhesives/thermal barrier reduce heat and cold transfer, while our exclusive tab and slot system of **mechanical interlocks** gives the door exceptional structural strength.

ProVia doors are **foam filled by a computer driven process** that ensures the optimal foam fill for maximum energy efficiency and strength.

The edges and face skin of our steel doors are **one continuous piece of steel** for strength and durability.

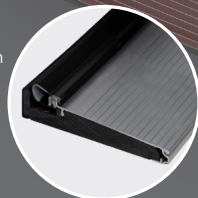
Plugless Window Trim is optional on Legacy Steel (see Price List for available styles)

To reinforce the lock and deadbolt area, we add a **rigid composite lock block** to all of our steel doors.

Our 20-gauge steel doors give you **49% more galvanized steel** than a standard 24-gauge door.



Composite bottom endcaps increase rigidity and energy efficiency.

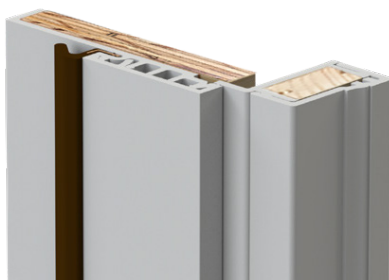


Z-AC Threshold with **auto-adjusting riser**. Standard with aluminum mill finish.



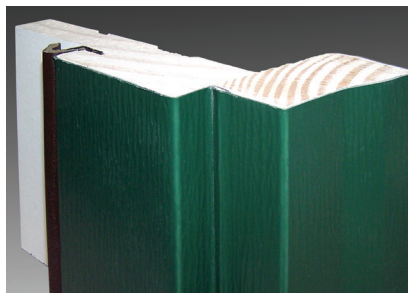
FRAME OPTIONS

FUSION FRAME



FusionFrame: A one-of-a-kind alternative to composite or wood jambs. This jamb offers a lifetime warranty. (*Finish warranty will match the finish warranty of the door series.) Available as a textured or smooth frame, providing you the benefit of a prefinished, maintenance-free system, along with the beauty of a stain or paint finish that matches your entry door. (*Not available for transoms or outswing doors.)

FRAME SAVER



FrameSaver: This jamb is made up of a wood frame and brickmold with a finger-jointed composite bottom that prevents water absorption and carries a Lifetime Limited Warranty when used with PVC vinyl coated aluminum frame cladding outside. Also available with smooth cladding.

PERMA TECH



PermaTech: A frame that combines all the strength and convenience of wood with enhanced properties that make it moisture and insect resistant. PermaTech will not absorb or wick moisture and will never rot or splinter, and it is covered by a Lifetime Limited Warranty*. (*No storm door applied. See full warranty for limitations.)

TRILENNIUM® MULTI-POINT HARDWARE

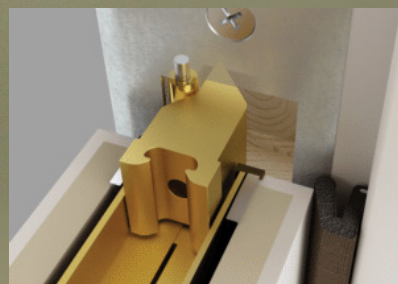
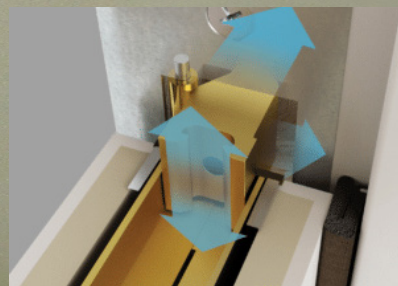
The Trilennium Multi-Point locking system provides more than security. It offers you better door closure and sealing than a single point lock.

Three 1" deadbolts latch with deadbolt throw.

Deadbolts include anti-saw hardened steel pin.

A solid I-beam runs the full length of the lock and increases the strength and precision of the lock.

Latch and deadbolt release with a single downward movement.



DOOR HARDWARE

Emtek door hardware is available in many different styles and finishes. Each order is custom, and you can pair knobs, levers, rosettes and finishes to complement your door and home style. Emtek door hardware carries a Lifetime Limited Warranty. Below is a selection of some of our most popular designs. Also, feel free to visit our showroom to see the handlesets in person.

OCTAGON (MB)



(Octagon Lever
shown)

Octagon
Knob

The Octagon handleset comes in two finishes: Medium Bronze (MB) and Flat Black (FB). Choose from the Octagon Lever or Octagon Knob.

BADEN (US10B)

LOGAN (MB)



(Yuma Lever shown)

RECTANGULAR MONOLITHIC (MB)



(Durango Lever shown)

RECTANGULAR SECTIONAL (FB)



(Teton Lever shown)

REMINGTON (MB)



(Cimarron Lever shown)

Butte Knob (TWB)



Winchester Knob (FB)



These four handlesets come in the following three finishes: Flat Black (FB), Medium Bronze (MB), and Tumbled White Bronze (TWB). You can mix-and-match between the levers and knobs shown above (Yuma, Durango, Teton, Cimarron, Butte and Winchester).

SARATOGA (US3)



(Egg Knob shown)

***BADEN (US4)**



(Helios Lever shown)

MARIETTA (US10B)



(Luzern Lever shown)

ADAMS (US10B)



(Cortina Lever shown)

Waverly Knob (US10B)



Norwich Knob (US15)



These four handlesets* above are available in the following finishes: Polished Brass-Lifetime (US3), Satin Brass (US4), Oil Rubbed Bronze (US10B), Flat Black (US19), and Satin Nickel (US15). (*Baden is NOT available in US3.) You can mix-and-match from any of the knobs/levers shown (Egg, Helios, Luzern, Cortina, Waverly and Norwich).

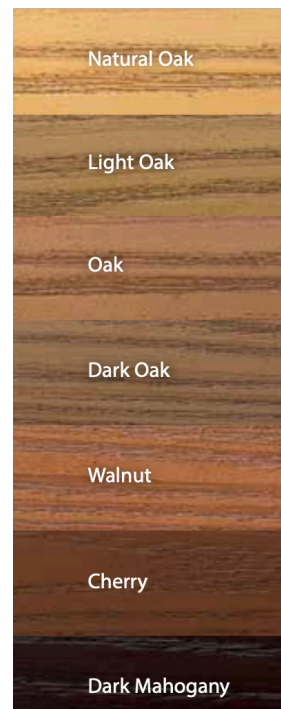
PAINT/STAIN FINISHES

Applied with care, by professionals. If you buy an entry system and finish it yourself, chances are it's the first door you've ever painted or stained. At ProVia, stains are hand-applied by professional craftsmen, many who have been perfecting their work for years. See below for ProVia's unique finishing system.

SIGNET STAIN



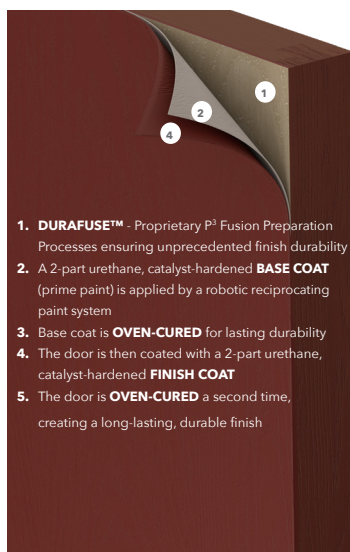
SIGNET & LEGACY LEGACY STAIN PAINT



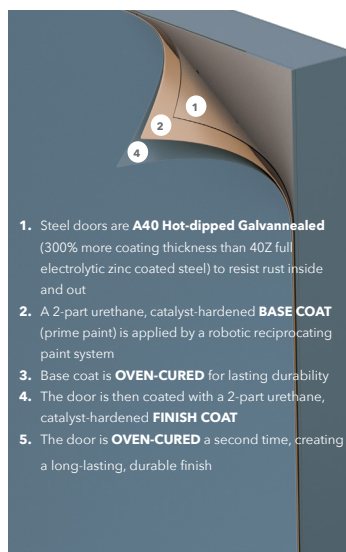
SIGNET 7-STEP STAIN FINISHING SYSTEM



SIGNET 5-STEP PAINT FINISHING SYSTEM



LEGACY 5-STEP PAINT FINISHING SYSTEM



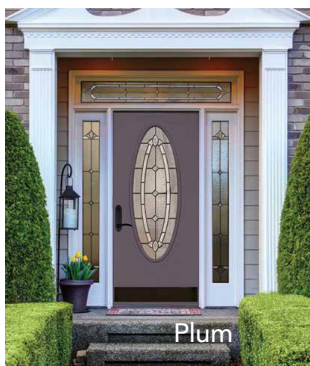
LEGACY 6-STEP STAIN FINISHING SYSTEM



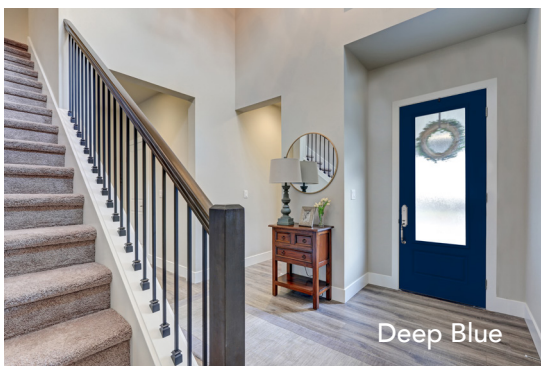
NEW TRENDING COLORS

Color trends are always changing. ProVia's color palette has been completely refreshed to give you even more paint color options for your entry and patio doors.

All of the traditional hues have been categorized and new 'trending' colors have been added, creating three distinct color palettes to suite your taste: Natural Instincts, Freshly Picked, and Stately Shades.



Plum



Deep Blue

FACTORY FINISH WARRANTY

15-Year Finish Warranty

Signet Fiberglass - Paint & Stain

10-Year Finish Warranty

Legacy Steel - Paint & Stain

**Custom paint colors are available using Sherwin Williams colors.

**Always refer to color selector for accurate color representation.

NGRW FINISH WARRANTY

1-Year Finish Warranty - Paint & Stain

Freshly Picked Paint Finishes

Hibiscus

Robin Egg

Plum

Avocado

Blueberry

Moss

Clover

Deep Blue

Cabernet

Goldenrod

Burnt Orange

Stately Shades Paint Finishes



INSTALLATION MATTERS

It is important to invest in a quality product. However, it's equally as important to ensure the installation is of the same caliber.

At North Georgia Replacement Windows, we seek to provide a seamless, hassle-free door installation that leaves you with not only a good-looking product, but a functioning one as well.

Some of the ways we achieve this are:

- Custom Built Sill Pan - this is a water management system we build on-site, allowing water to flow away from your door/home.
- Composite Exterior Trim - when we replace your door, we also replace all of the exterior brickmold in a no-rot, composite material.
- Quality Materials - OSI Quad Max sealant and foam is used to properly seal your door opening, helping to prevent future water and air infiltration.



- Lifetime Service Warranty - along with Provia's product warranty, we offer a Lifetime Service Warranty on product and installation-related issues for as long as you live in the home. If you experience any problems with your door, we will come out, free of charge, to fix your issue.





Visit Our Showroom:

1210 Warsaw Rd. Suite 1000, Roswell, GA 30076

M-F: 8 am - 5 pm* | Saturday: 10 am - 2 pm*

*or by appointment

770.888.1604 | ngwindows.com

INFINITY[®]
from **MARVIN**
REPLACEMENT WINDOWS
by NORTH GEORGIA
REPLACEMENT WINDOWS